



B **BETAFENCE**

SmartFence
Manual ed. Nov. 2020

Content

- Tools Required
- SmartFence Parts
- Installation
 - Preparation
 - Assembly
 - Sloping



SmartFence Conduit System

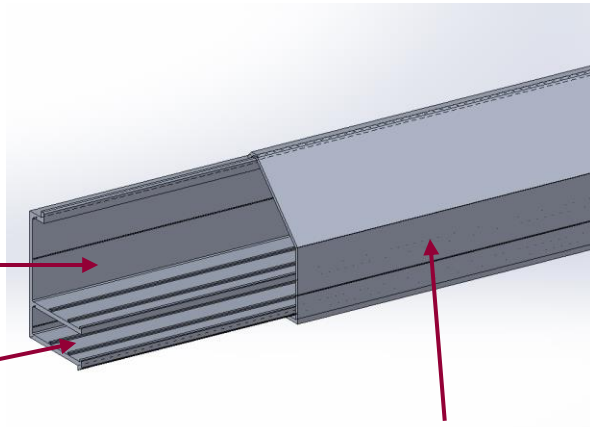
Tools Required

- Tools Required for installation
 - Drilling machine
 - metal drill $\varnothing 9$
 - Drill to remove sharp edges
 - Handheld disc cutter
 - Blind rivet tool
 - Wrenches and/or socket spanners (13mm)
 - Tape measure
 - Marker
 - Stanley knife / Utility knife / Box cutter



SmartFence parts for installation on panels

Aluminium Conduits



Chamber for other cables

Chamber for power cables

Conduit cover

Fixator



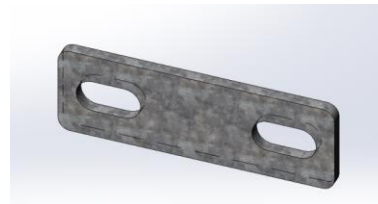
Washer M8

Nut M8



Round head square neck bolt M8x25

Connector



SmartFence parts for installation on posts

Type 1 Bracket



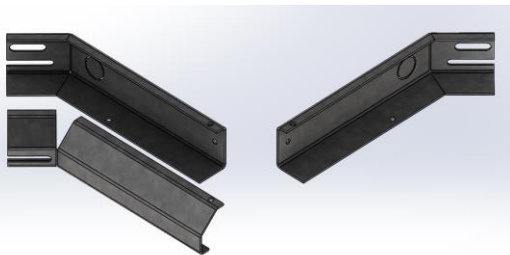
Brackets to be used in combination with smaller posts.
Straight line installation
e.g. Bekafix, 60x60; 80x60

Type 2 bracket



Brackets to be used in combination with larger posts.
Straight line installation
e.g. BekaSecure; 120x60; 120x120

Corner bracket



Brackets to be used for cornering (all post sizes).

Cornering: bracket combinations

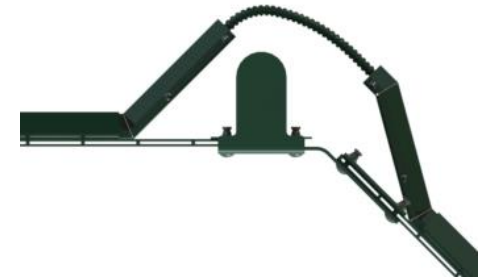
BIG POSTS



“Short” brackets for big posts



Combination of “corner” + “short” for inside corners



Extra cable protection for outside corners

SMALL POSTS



“Long” brackets for small posts

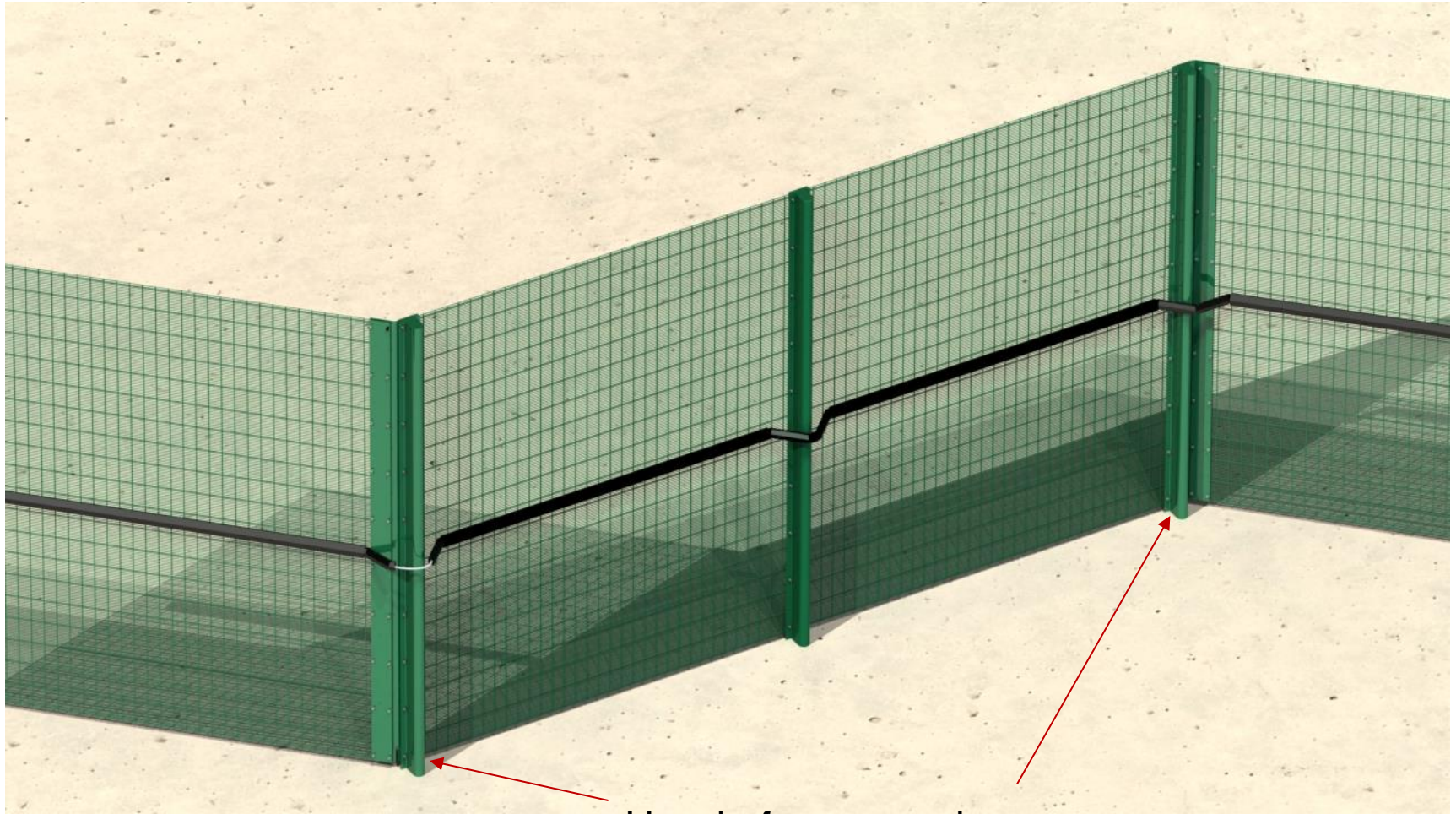


“Corner” connectors for inside corners



Extra cable protection for outside corners

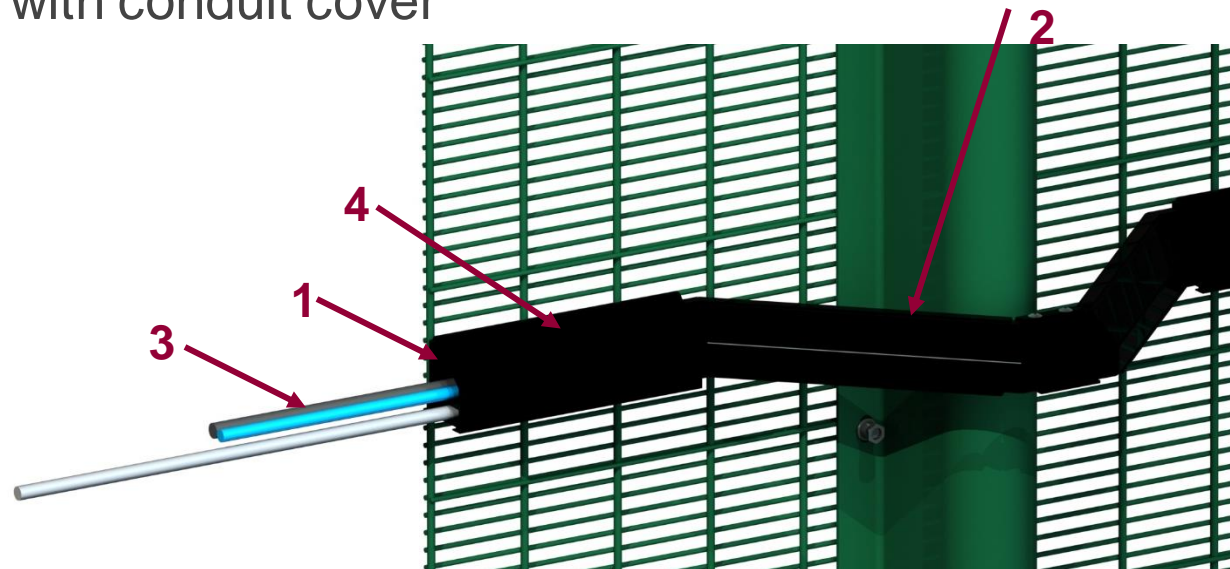
Cornering



Hassle free cornering

Installation

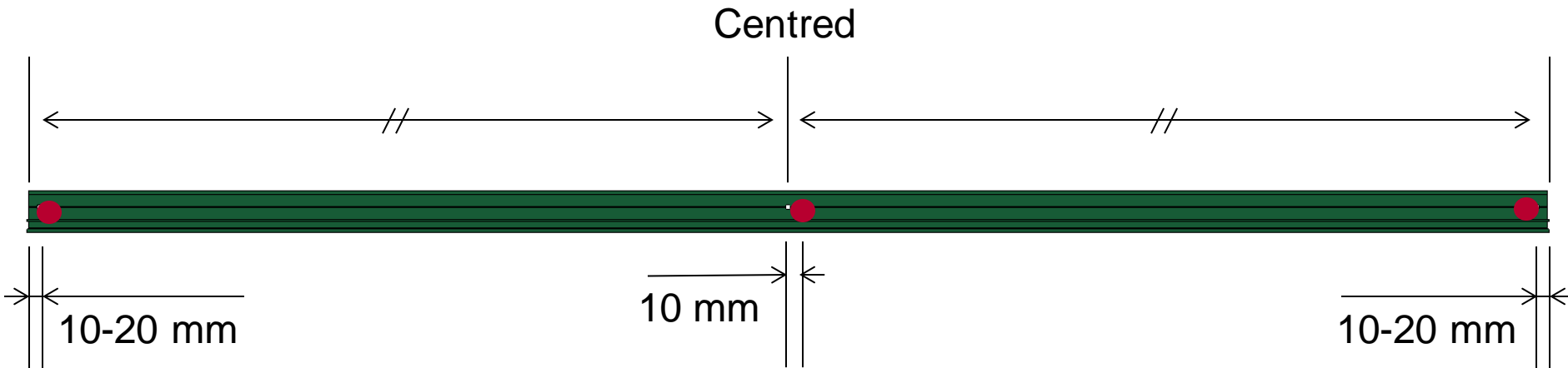
- Installation must always follow the below sequence:
 1. Fasten conduit chamber
 2. Fasten brackets around posts
 3. Lay cables in chambers (power cable always in bottom chamber)
 4. Close with conduit cover



Installation of the chamber conduit on fence panel

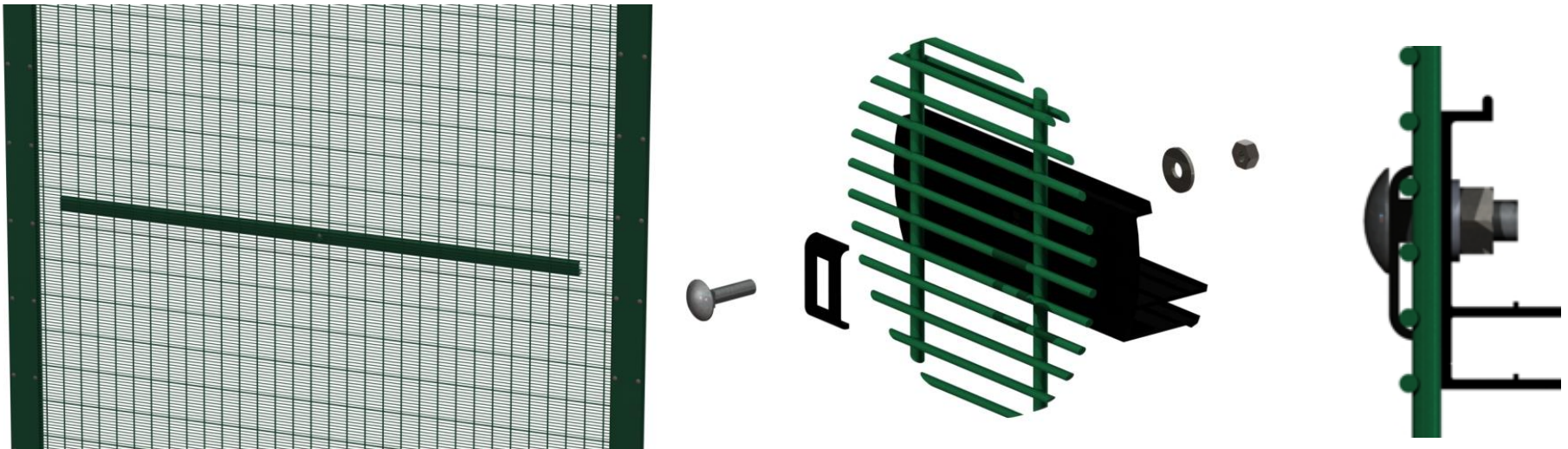
- Preparation - drilling

- Drill 3 holes ($\varnothing 7\text{mm}$) in the chamber already cut to desired length
 - 10mm away of the middle of the profile in any side
 - 10-20mm of the Left side of the profile
 - 10-20mm of the Right side of the profile
- Do not drill holes in the covers



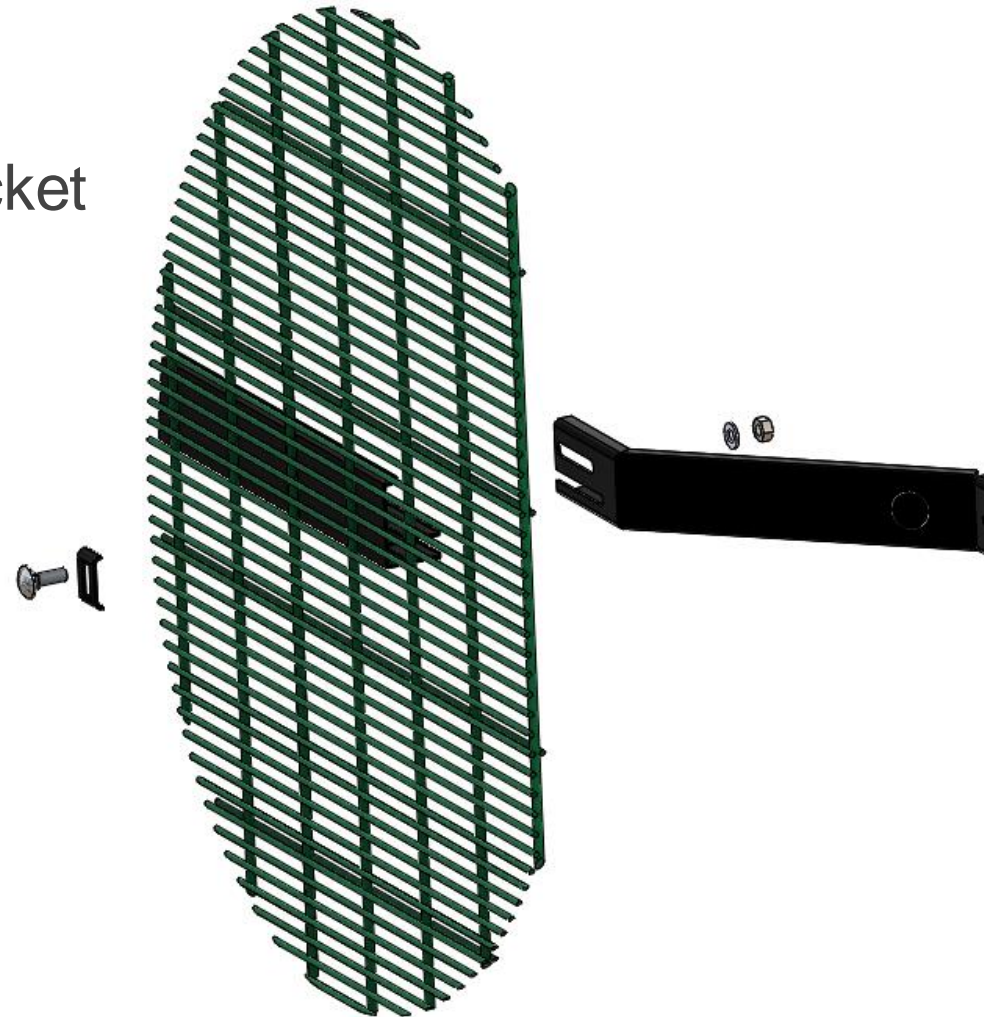
Installation on fence panel

1. Mount the chamber on the fence panel at the desired height and fasten with 1 fixator in the centre hole



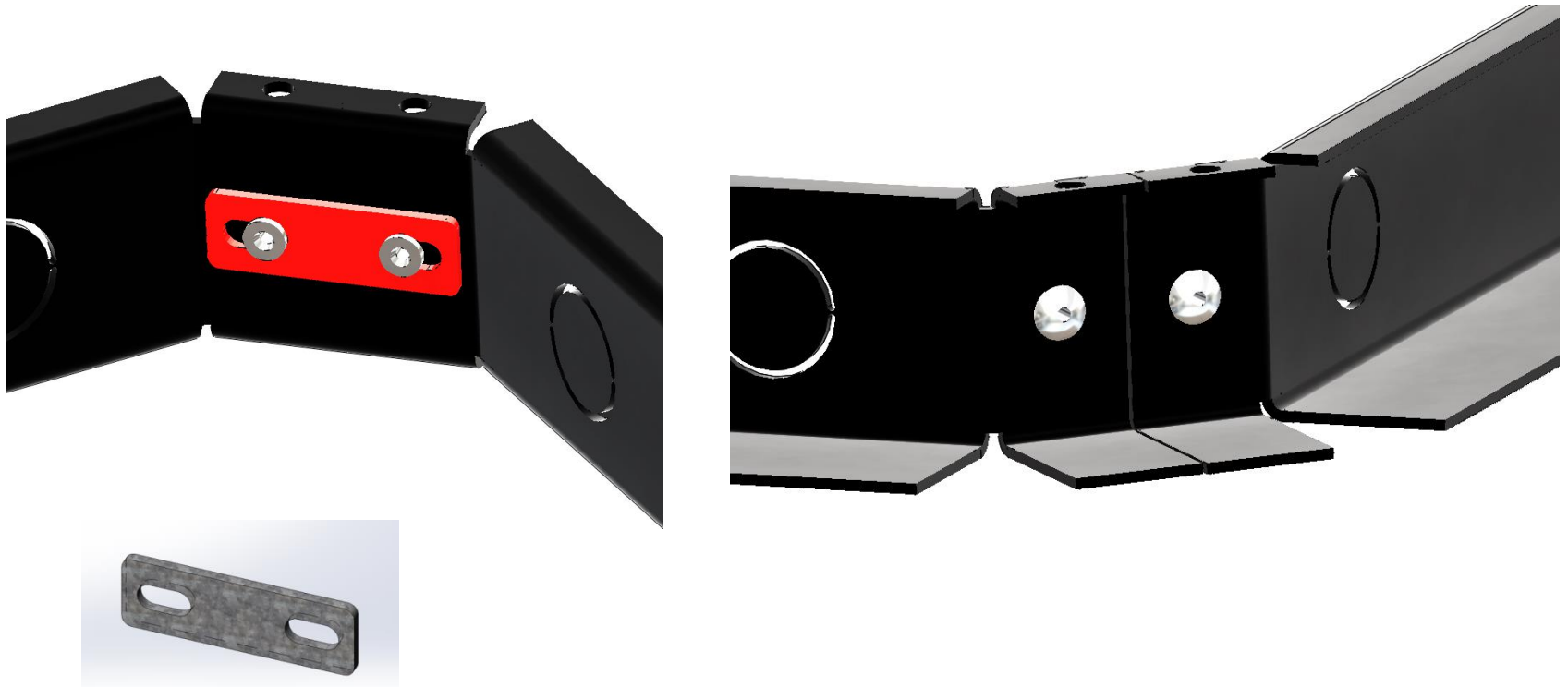
Installation around posts

2. Slide brackets inside the chamber
3. Fasten chamber and bracket with fixators as shown



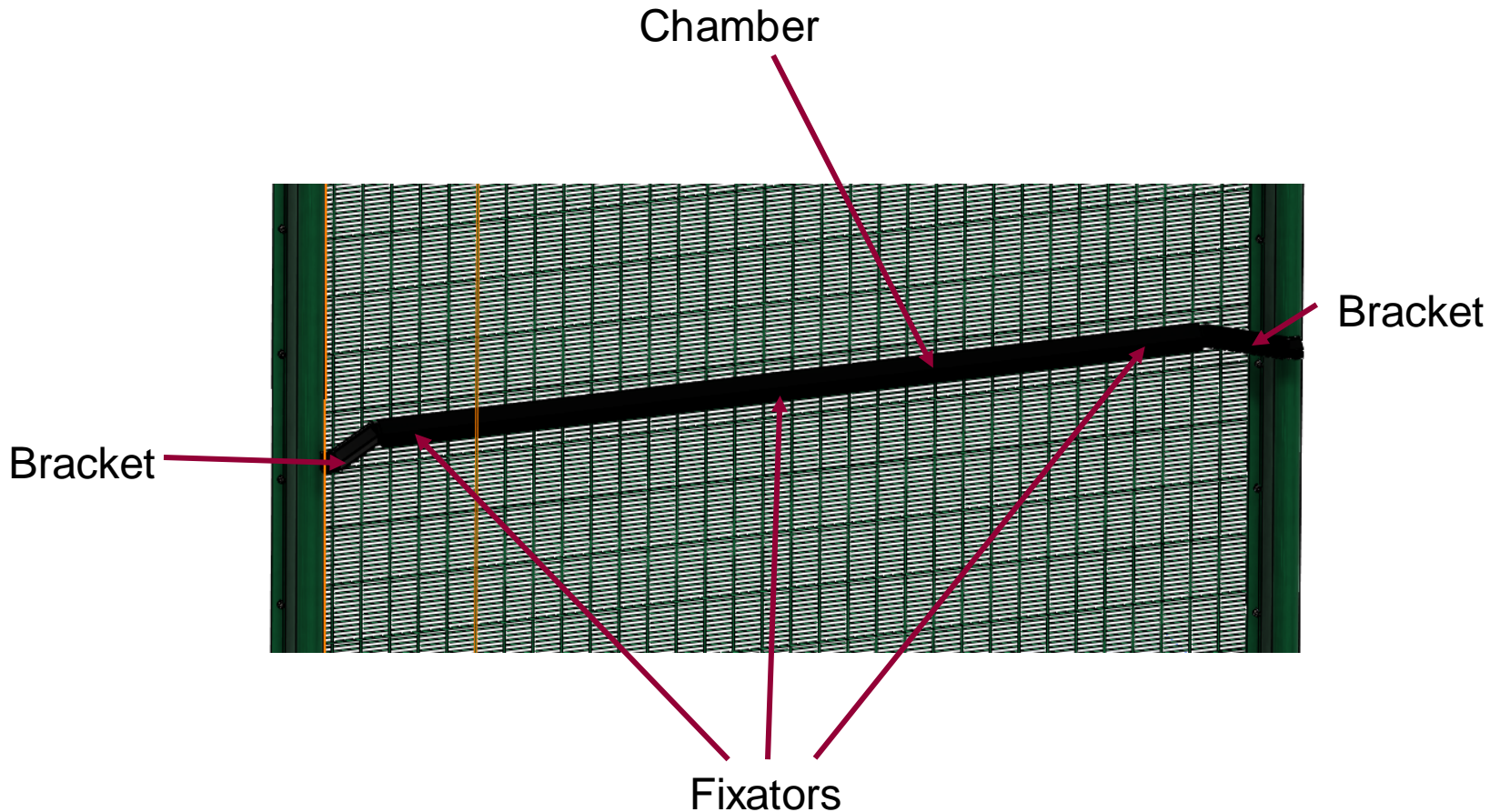
Installation around posts

4. Connect the two brackets with the plates and two rivets



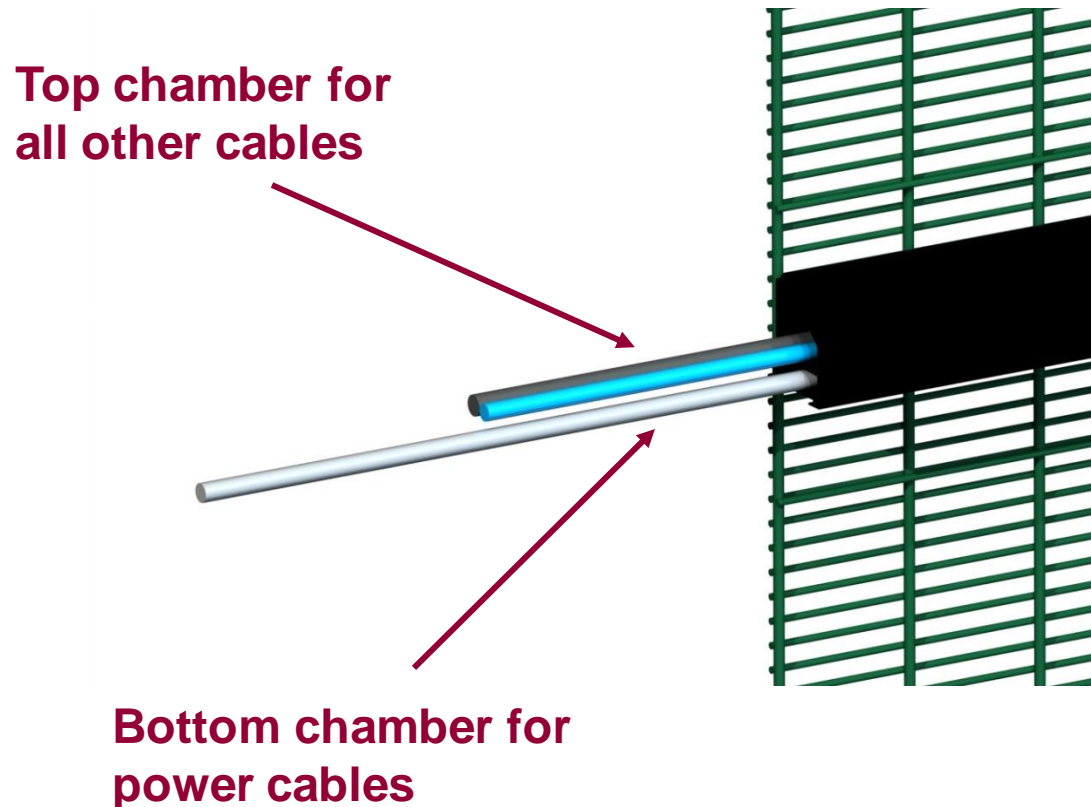
Installation

5. Continue in the same way until the installation is complete.



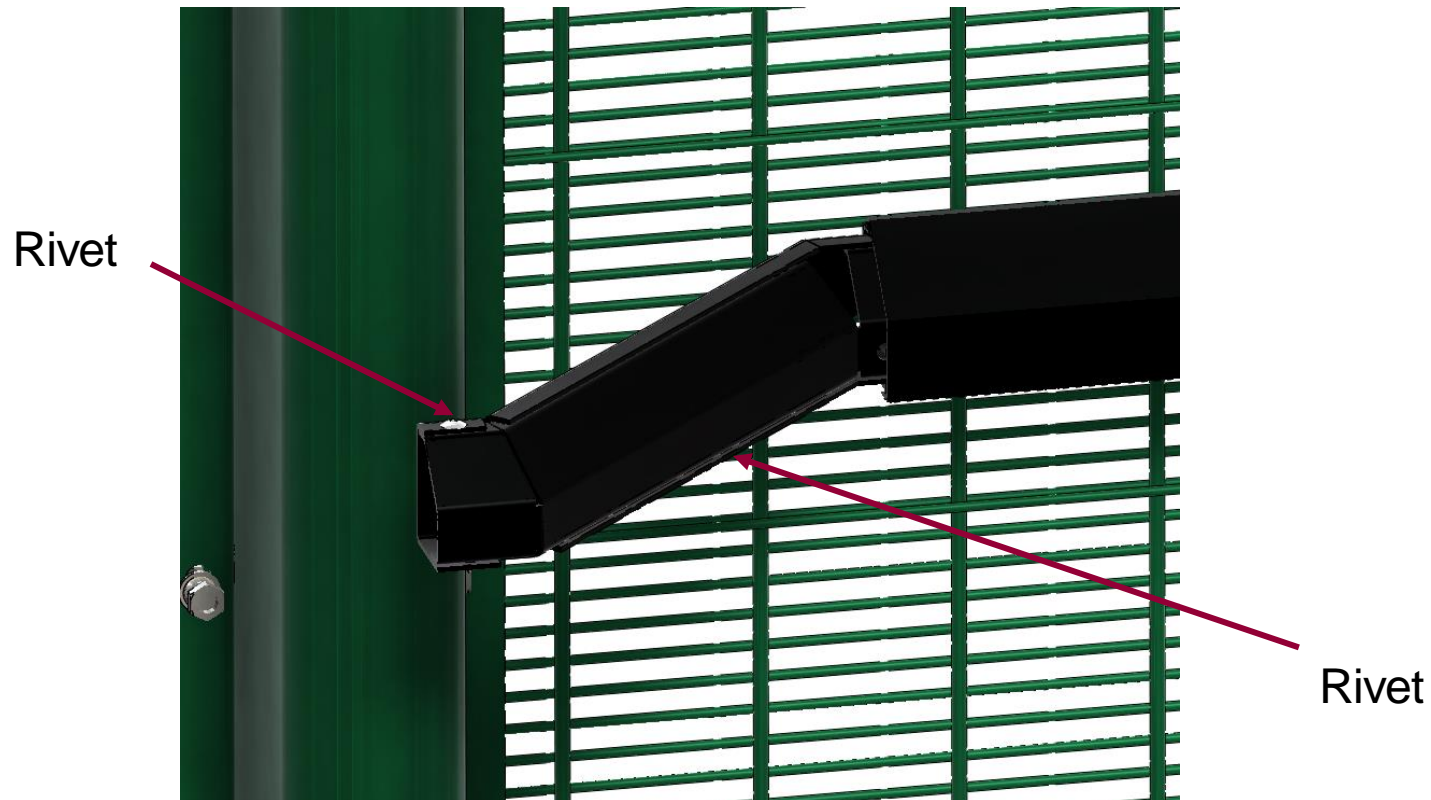
Installation

6. Lay all necessary cabling inside the chambers
 - Always install power cables in the bottom chamber



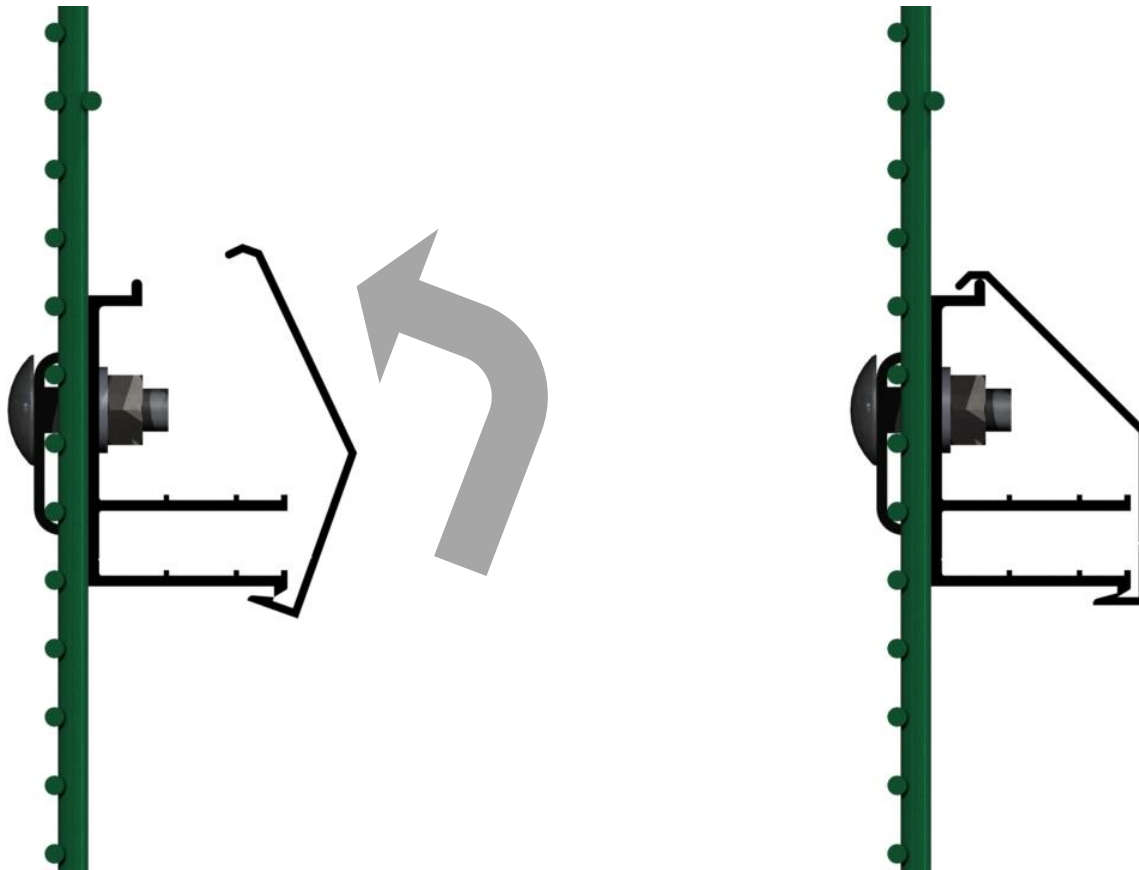
Installation

7. After placing cables, close the brackets with the bracket covers
8. Secure each cover with 2 rivets in the pre-drilled holes



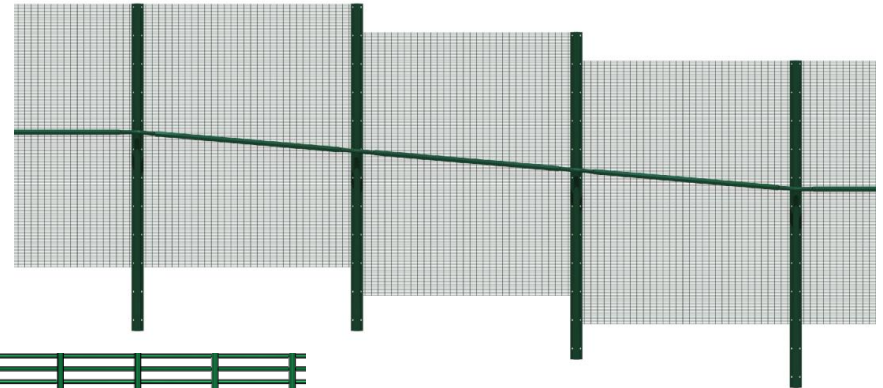
Installation

9. Close the conduit by clicking the cover over the chamber.



Installation on sloping ground

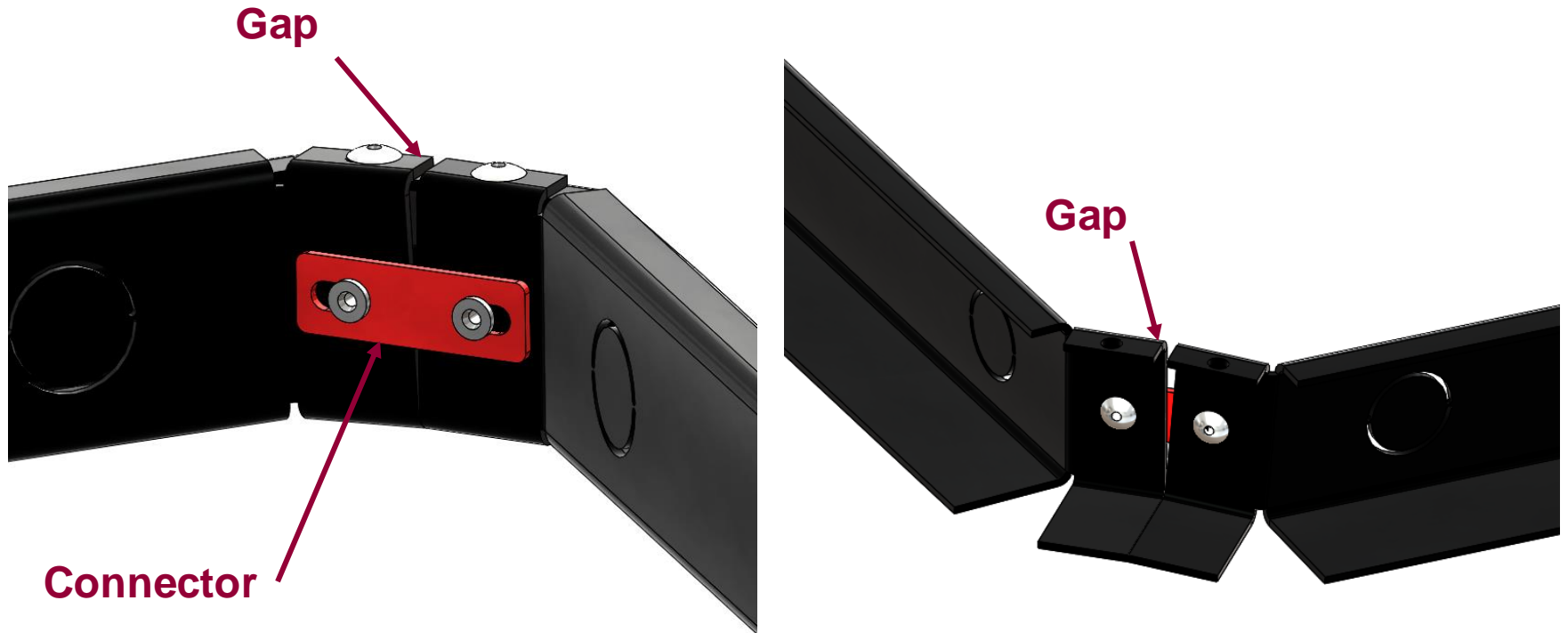
Adjust angle of conduits and brackets to accommodate stepping



Installation on sloping ground

A gap between the 2 brackets when angles are adjusted for sloping is normal and will not affect cables.

Install connectors at the back of brackets as shown below



Contact Thomas.Lambrecht@Praesidiad.com for more information or technical support

IB BETAFENCE
Securing What Matters

www.betafence.com