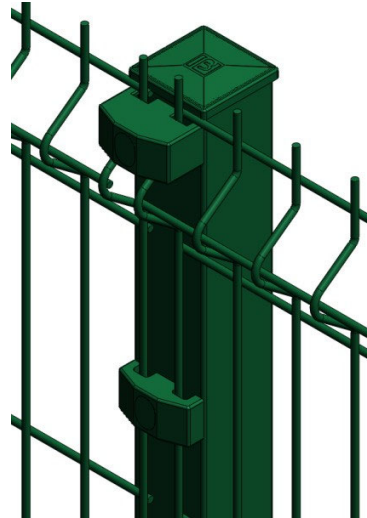


# **Nylofor / Twilfix Square & rectangular posts**

Installation manual





**Square &  
rectangular  
posts**



**Nylofor / Twilfix®  
post systems**

# Content

---

## **1. Components**

1. The posts
2. Fixators and tools
3. The Nylofor panels
4. RollTop and Paladin panels
5. Nylofor City system

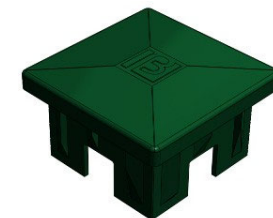
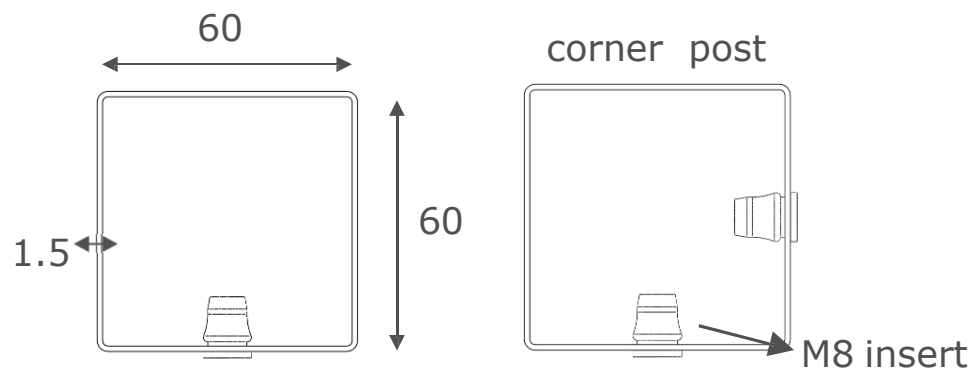
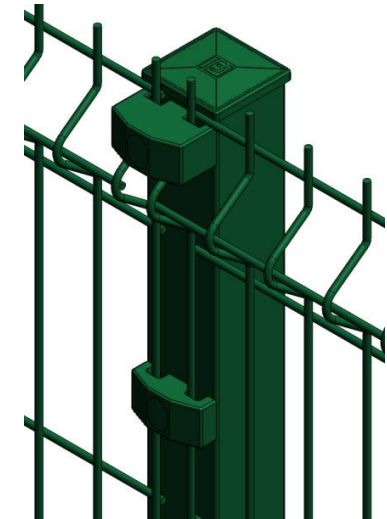
## **2. Installation**

1. Foundations
2. Installation of posts & panels
3. Installation of Nylofor City system

# 1. Components

## 1. The posts

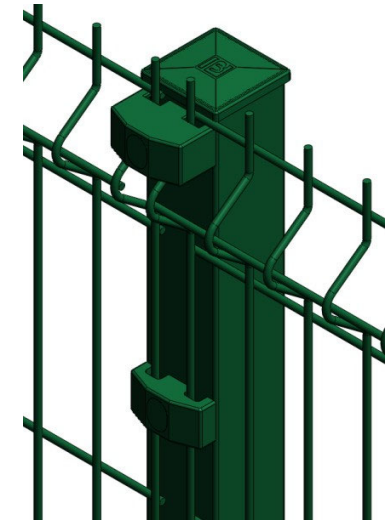
- Posts with 60x60x1.5mm sections are available for panels from 0.6 to 2.4 m
- For installations higher than 2.4m, rectangular posts with profile 80x60x2,5mm or 120x60x3mm are used
- The posts are galvanised inside and outside and polyester coated
- This type of post can be installed with all Nylofor panels
- RollTop and Paladin panel also can be installed
- The posts are equipped with M8 inserts to attach the panels with clamps and security bolts
- Additionally inserts for panel stepping are available
- Each post is fitted with a PP post cap with Betafence logo
- Posts with inserts in 2 adjacent sides are available to make corners



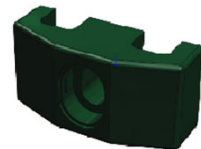
# 1. Components

## 2. Fixators and tools

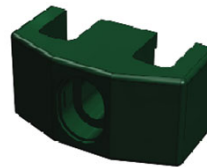
- PA fixators with caps, to be attached with M8x40 security bolts (ISO 7380)
- Different fittings are available, depending on the type of panel being installed



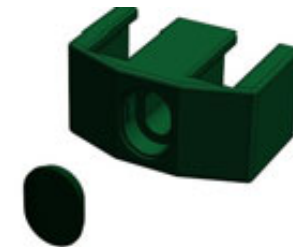
- 2D
- 3D INT\*
- 3D Pro INT\*
- 3D Pro XL INT\*
- RollTop



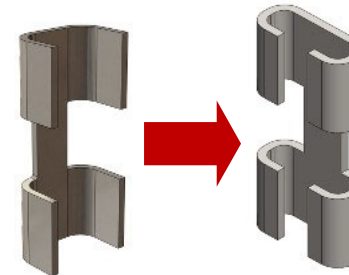
- 2D Super
- 3D Super



- F



- 3D
- 3D Pro
- 3D Pro XL



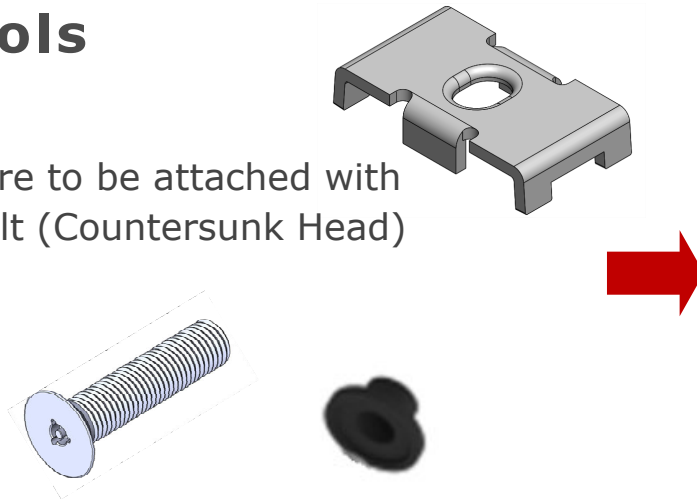
\*INT = intermediate = clamps that are not positioned in a nose

- A bracket (in stainless steel) is used to attach one panel on top of another or for two panels in a sharp angle (only Nylofor 3D and Nylofor Medium).

# 1. Components

## 2. Fixators and tools

- Metal fixators for panel Rolltop are to be attached with M8x40 security bolts Tri-Lobe Bolt (Countersunk Head) and plastic washer









- Metal cover for Paladin panel are to be attached with M8x40 button head bolt



# 1. Components

## 3. The Nylofor panels



- Range:

Type	3D Pro	3D	2D	3D Super	F	2D Super
Height	1,03 – 2,43 m	1,03 – 2,43 m	1,03 – 2,03 m	1,63 – 2,43 m	0,63 – 2,03 m	1,03 – 2,43 m
Width	2,5 m	2,5 m	2,5 m	2,5 m	2,5 m	2,5 m
Wire dia	H: 5mm V: 5mm	H: 5mm V: 5mm	H: 2x6mm V: 5mm	H: 8mm V: 5mm	H: 15x6mm V: 5mm	H: 2x8mm V: 6mm
Mesh size	200 x 50 mm	200 x 50 mm	200 x 50 mm	200 x 50 mm	200 x 50 mm	200 x 50 mm
Nose type	1 wire	1 wire	none	1 wire	none	none
Coating	GALV+PVC 	GALV+PES 	GALV+PES 	GALV+PES 	GALV+PES 	GALV+PES 

# 1. Components

## 4. The RollTop & Paladin panels

- Range:

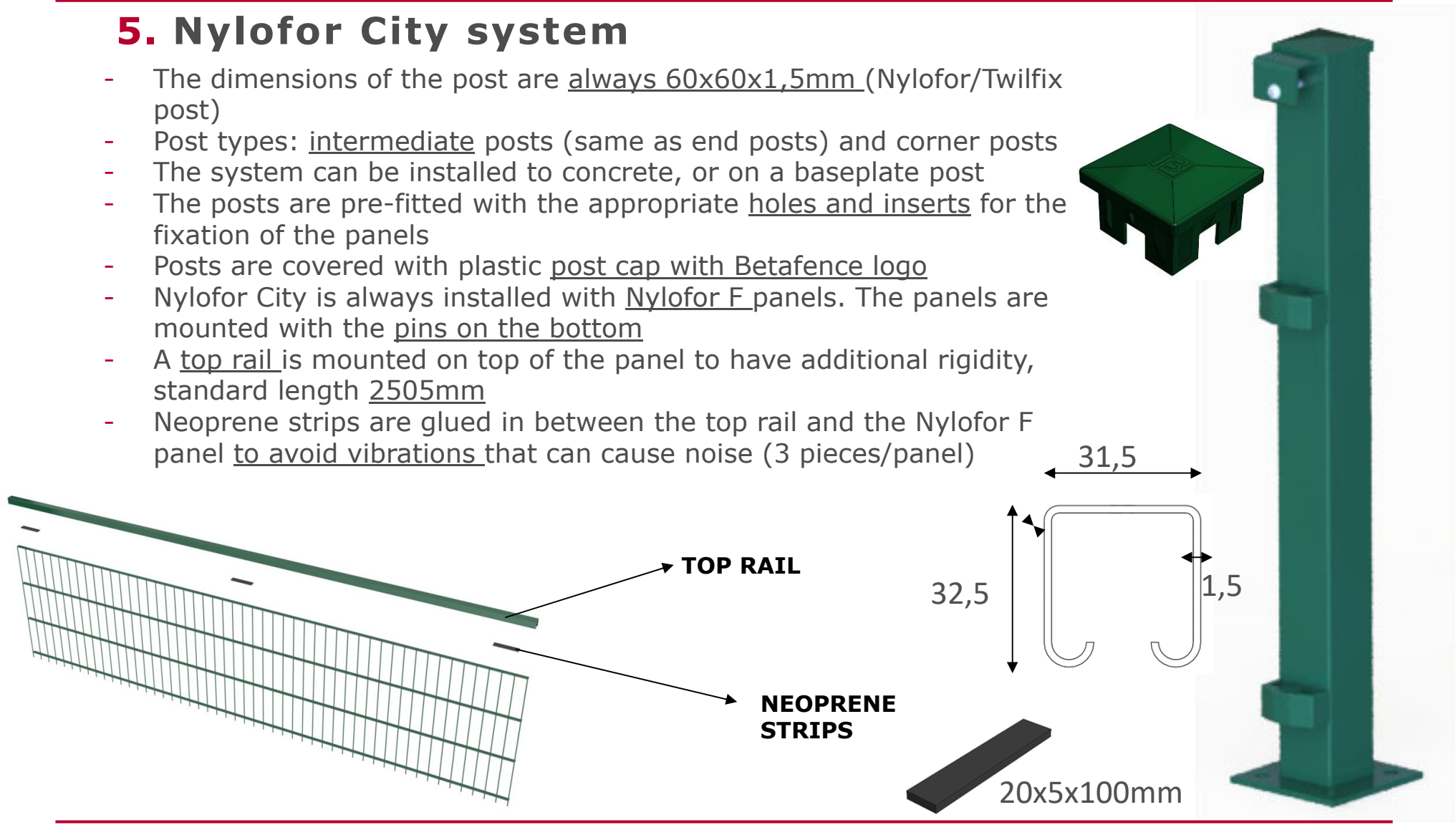
Type	Roll Top	Paladin
Height	900; 1200; 1500; 1800; 2400 mm	1240; 1850; 2038; 2445 mm
Width	3 m	3 m
Wire dia	H: 5mm V: 5mm	H: 4mm V: 3mm
Mesh size	150 x 50mm	50,8x50,8 ; 50,8x25,4 ; 50,8x12,7 ; 25,4x12,7mm
Nose type	4 wire	5 wire
Coating	GALV+PES 	GALV+PES 



# 1. Components

## 5. Nylofor City system

- The dimensions of the post are always 60x60x1,5mm (Nylofor/Twilfix post)
- Post types: intermediate posts (same as end posts) and corner posts
- The system can be installed to concrete, or on a baseplate post
- The posts are pre-fitted with the appropriate holes and inserts for the fixation of the panels
- Posts are covered with plastic post cap with Betafence logo
- Nylofor City is always installed with Nylofor F panels. The panels are mounted with the pins on the bottom
- A top rail is mounted on top of the panel to have additional rigidity, standard length 2505mm
- Neoprene strips are glued in between the top rail and the Nylofor F panel to avoid vibrations that can cause noise (3 pieces/panel)



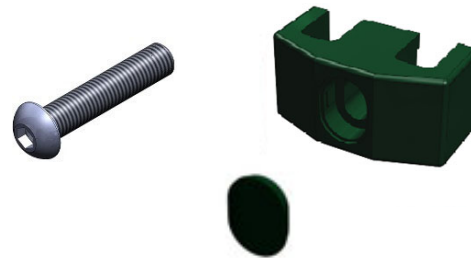
# 1. Components

## 5. Nylofor City system

- Nylofor City is installed with one metal clamp on top to hold the rail, the other clamps are standard Nylofor F clamps (PA)
  - There are 3 types of metal clamps: an intermediate clamp, a left corner clamp and a right corner clamp. Corner clamps are also used for end posts. They are fixed with Hexagon Socket Button Head screws (ISO 7380) M8x60 in stainless steel.



- Nylofor clamps for Nylofor F. The plastic clamps are fixed with Hexagon Socket Button Head screws (ISO 7380) M8x40.



# 2. Installation

## 1. Foundations

- To obtain the best result, it is advisable to level the ground over the whole length of the fence
- For correct positioning, maintain the centre-centre distances. (with a tolerance of +/- 5 mm)
- The distance is determined the type of panel being installed

Panel type	Centre-Centre distance
Nylofor	2530 mm
3D PRO XL, RollTop*	3030 mm
Paladin*	2975 mm



- Align the fence line
- To determine the dimensions of the foundations it is advisable to consult a specialised engineer to evaluate wind load, solar conditions and any other factors requiring specialist opinion (concrete quality directive B30)
- In case of direct installation the post needs to be supported as long as necessary



\*Additional installation documents are available

## 2. Installation

---

### 2. Installation of posts & panels

- Installation principle: when placing square posts, first all the posts can be placed and then the panels can be attached.

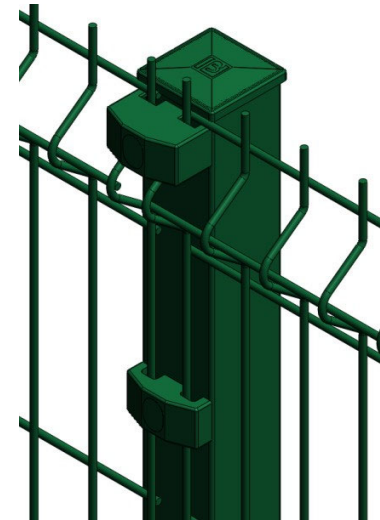
#### **ALIGNING THE POSTS**

##### Installation on an even surface

- Place a pin before the first post of the fence and another behind the last post. Connect those posts with two guide ropes.
- The lower guide rope should be between 20 and 40 cm above the ground. Now align all inserts with the upper guide rope.

##### Installation on a sloping surface

- Place a guide rope for the same heights. In case of a difference in height, place a supplementary guide rope at the height of the upper insert.

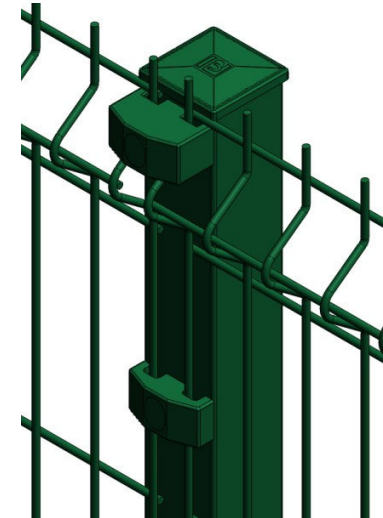


## 2. Installation

### 2. Installation of posts & panels

#### PLACEMENT OF THE POSTS (USE A TEMPLATE)

- A template makes it much easier to place the posts correctly: a mould of 2530 mm\* needs to be used to see if the posts are placed at a correct distance (measured center-center, with a tolerance of +/- 5 mm)
- The template must be made by the installer and must have 2 recesses into which the posts fit perfectly
- Place the posts, correctly aligned (vertically and horizontally) and with the correct distance between them. For end posts and corner posts the distance is 3 cm smaller
- Use a spirit level to ensure the posts are placed at the correct verticle angle.



\* dimension depends of panel type

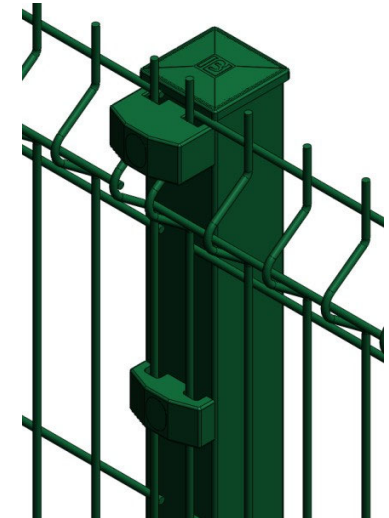


# 2. Installation

## 2. Installation of posts & panels

### INSTALLATION OF THE PANELS

- Join two panels together on an intermediate post at the correct height
- Place a clamp in the upper insert of the post and tighten the security bolt halfway
- Now place an additional clamp in the lower insert and tighten the security bolt halfway
- Repeat this procedure for all intermediate posts and finish with the corner post
- Now place the bolts into the other clamps and tighten all bolts completely and firmly
- Finally, cover the clamp holes with a cap



### FIXATORS PER POST

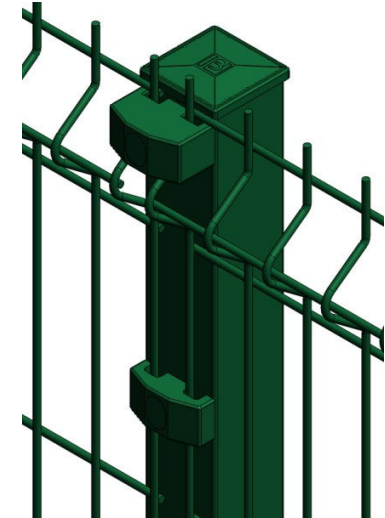
Panel height	Number of fixators
630mm	3
1030mm	3
1230mm	4
1430/1530mm	4
1630/1730mm	5
1830/1930mm	5
2030mm	6
2430mm	7

## 2. Installation

### 2. Installation of posts & panels

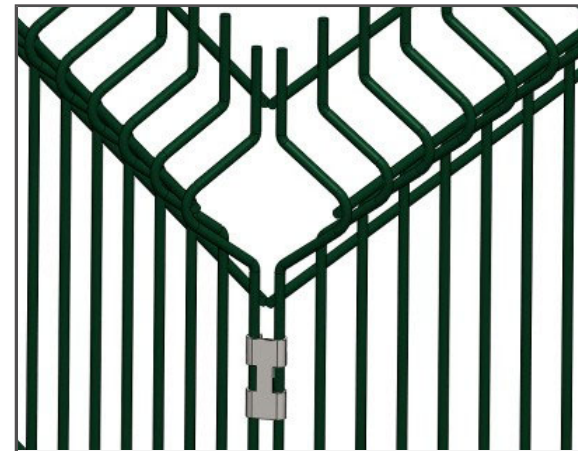
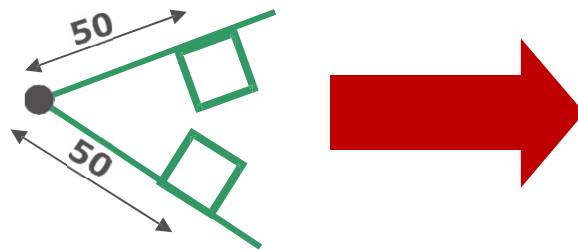
#### MAKING CORNERS

- RIGHT ANGLE



Only for Nylofor 3D / 3D Pro

- ACUTE/OBTUSE ANGLE  
Place two intermediate posts 50 cm from the corner.

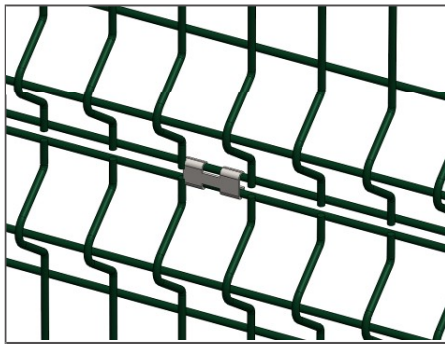


# 2. Installation

## 2. Installation of posts & panels

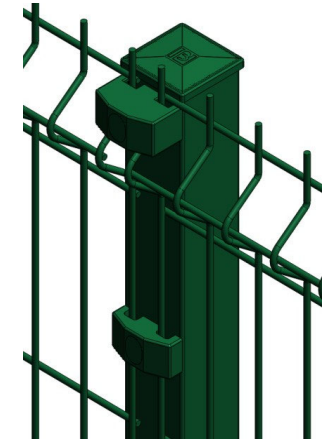
### PANELS ON TOP OF EACH OTHER

- Connect the panels using 3 brackets per panel



### SLOPES

- On slopes extra fixators must be placed



- Measure the area accurately compared to the zero level
- Do this in different places
- The zero level can be determined by means of a laser or similar instrument
- Determine all differences in height on the fence line
- For slopes of more than 15% posts must be placed closer together. Shorten the panels and repair the ends with zinc and polyester paint

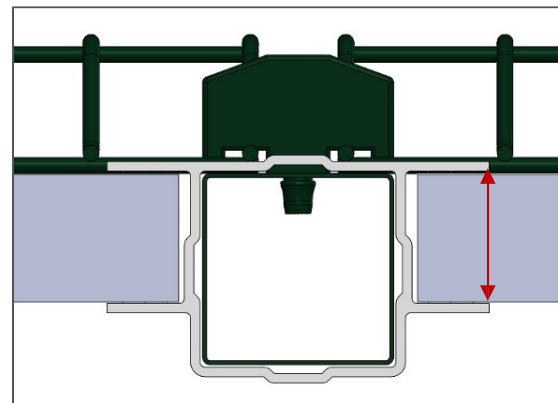
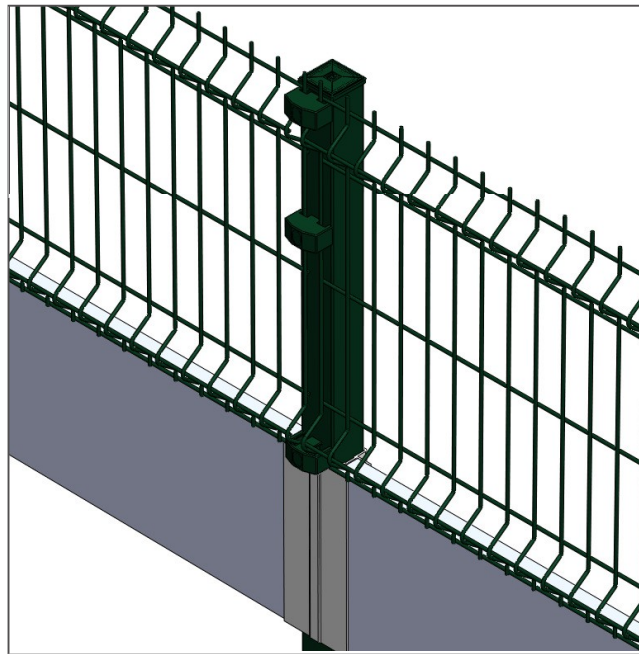


## 2. Installation

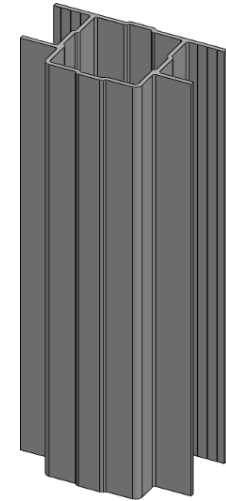
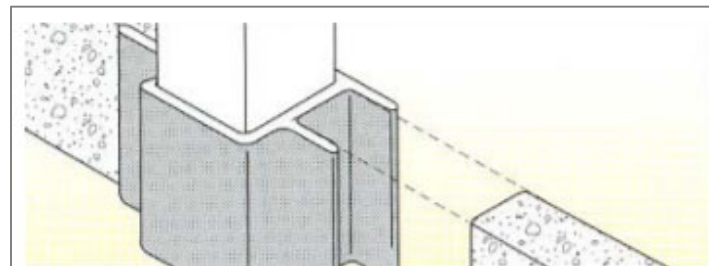
### 2. Installation of posts & panels

#### INSTALLATION WITH CONCRETE SLABS

- Use concrete slab supports for 60x60 posts (hard PVC)



width 4cm -  
height 30cm

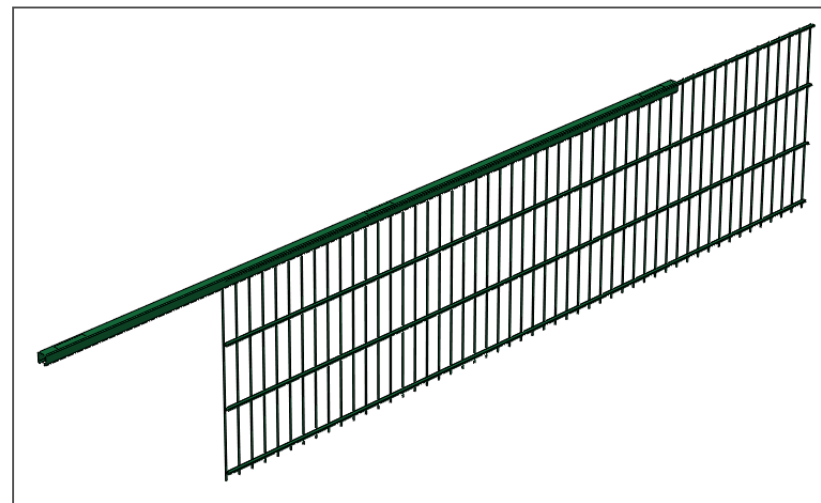
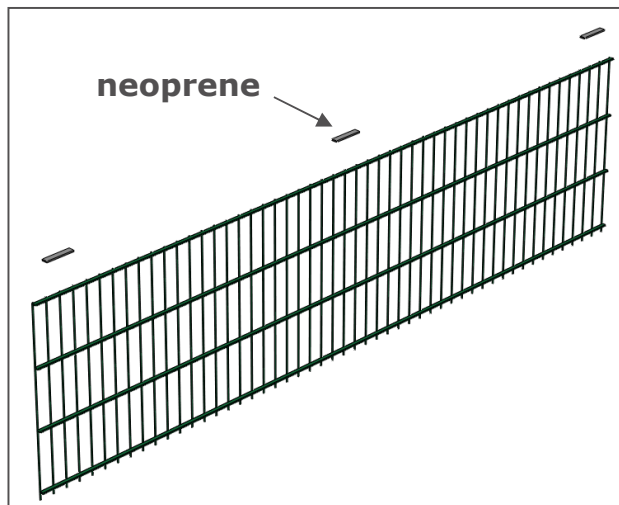
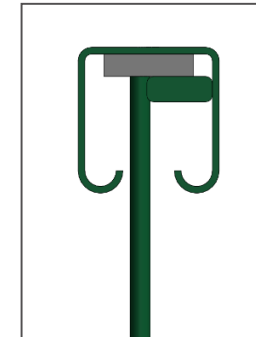


## 2. Installation

---

### 3. Installation of Nylofor City system ASSEMBLING THE PANEL

- Glue the neoprene strips on the top of the horizontal wire of the panel. Divide 3 strips over the complete width of the panel
- Slide the panel into the top rail
- Assemble a second panel



## 2. Installation

---

### 3. Installation of Nylofor City system

#### INSTALLING THE PANELS

- Fasten the top of the panels with a metal clamp
- Fasten the other positions of the panels with the PA clamps
- Repeat these steps to complete the installation
- In case of an end post, use a corner clamp to fix the top of the panel



## 2. Installation

---

### 3. Installation of Nylofor City system

#### INSTALLING CORNERS / SLOPES

- In case of a corner, use a corner post with inserts on two adjacent sides. Fasten the top of the panel with left and right corner clamps
- Only corners of 90° are possible. In any other situation, two posts have to be installed
- In case of a slope, also two posts have to be used



---

**IB BETAFENCE**